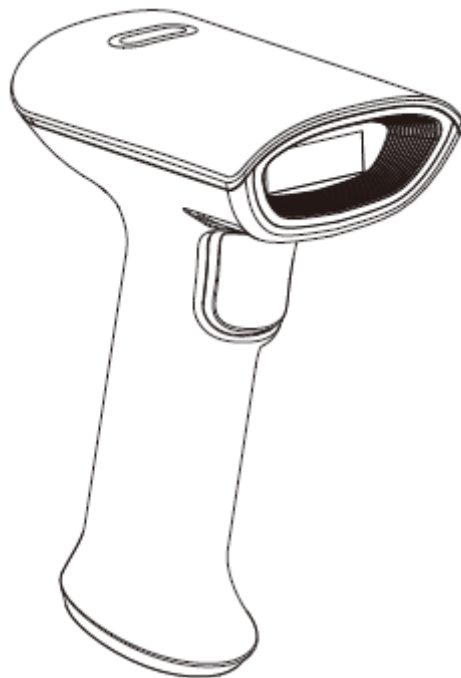


Handheld Barcode Scanner

N80



Driver Manual

Rev.1.0

CONTENT

- 1.Software Preparation1
- 2.Software Installation1

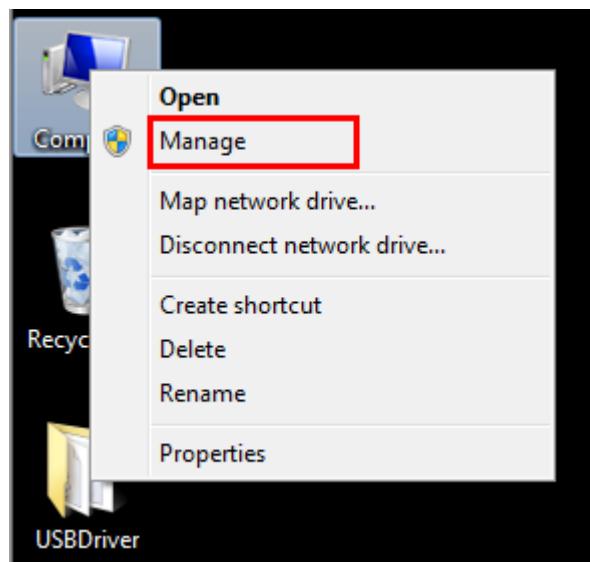
1. Software Preparation

Unzip the installation package and place it on your computer desktop (It also can be placed in a different computer location depending on your needs).

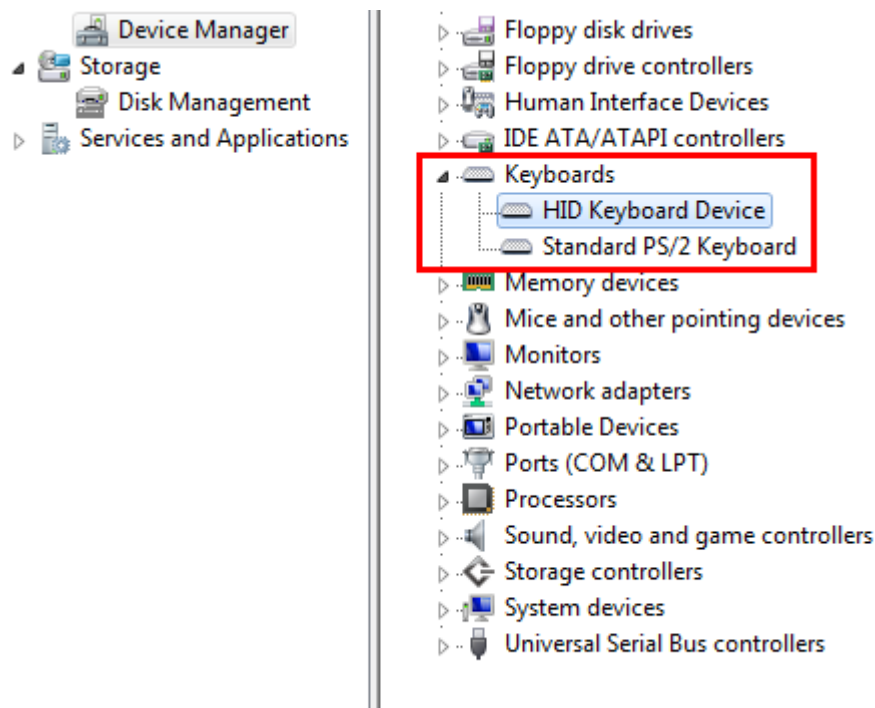


2. Software Installation

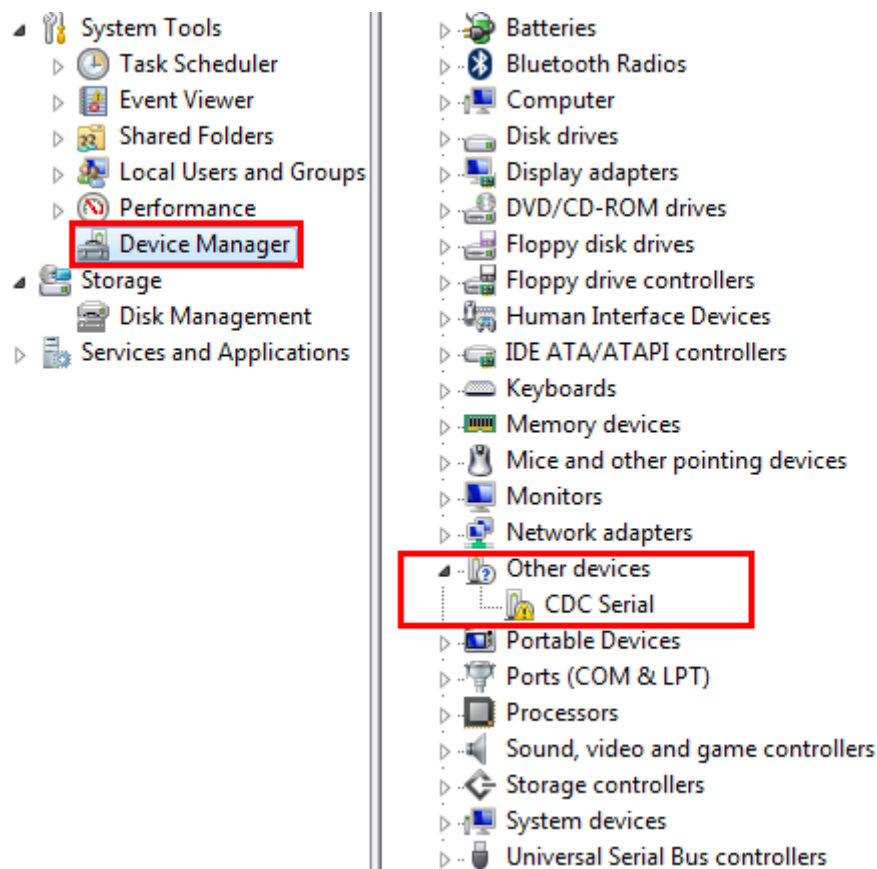
1. Right-click the **Computer** to choose the **Manage**.



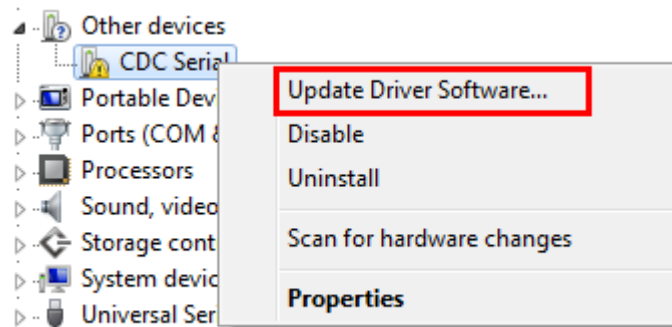
2. Open the **Device Manager**, if the device is in virtual keyboard mode, as follows:



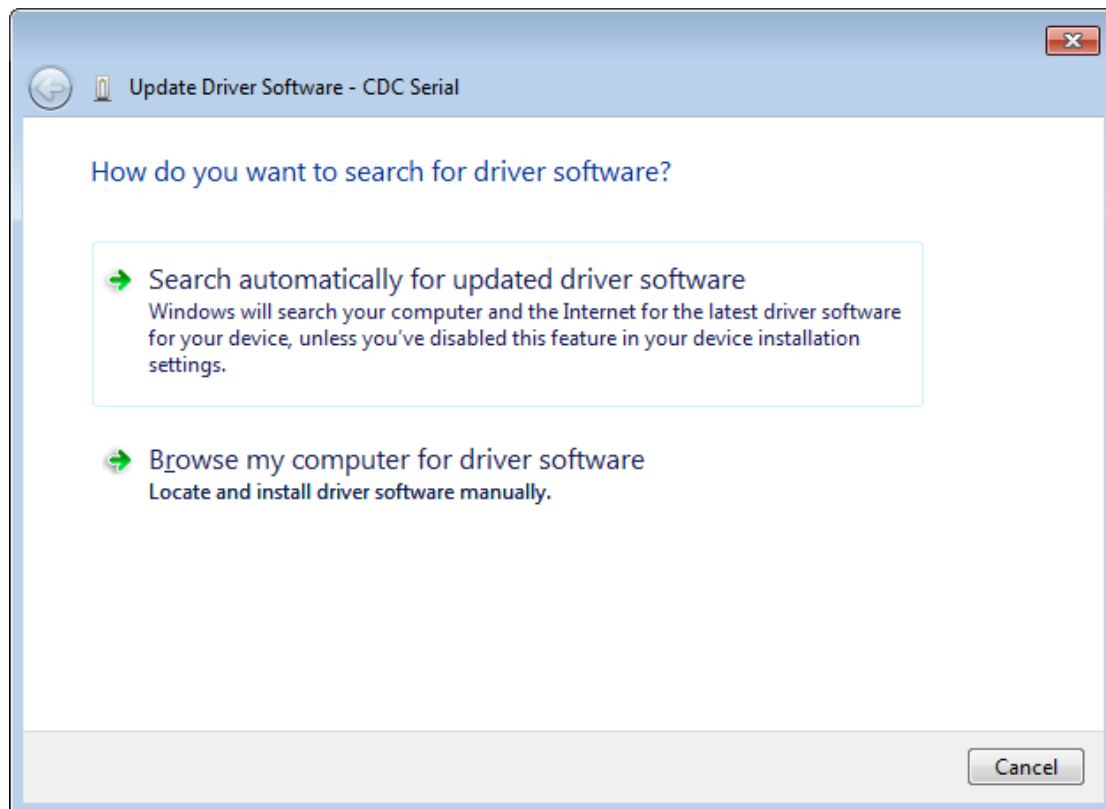
3. If the device is in non-virtual keyboard mode, click **Other Devices**, as follows:



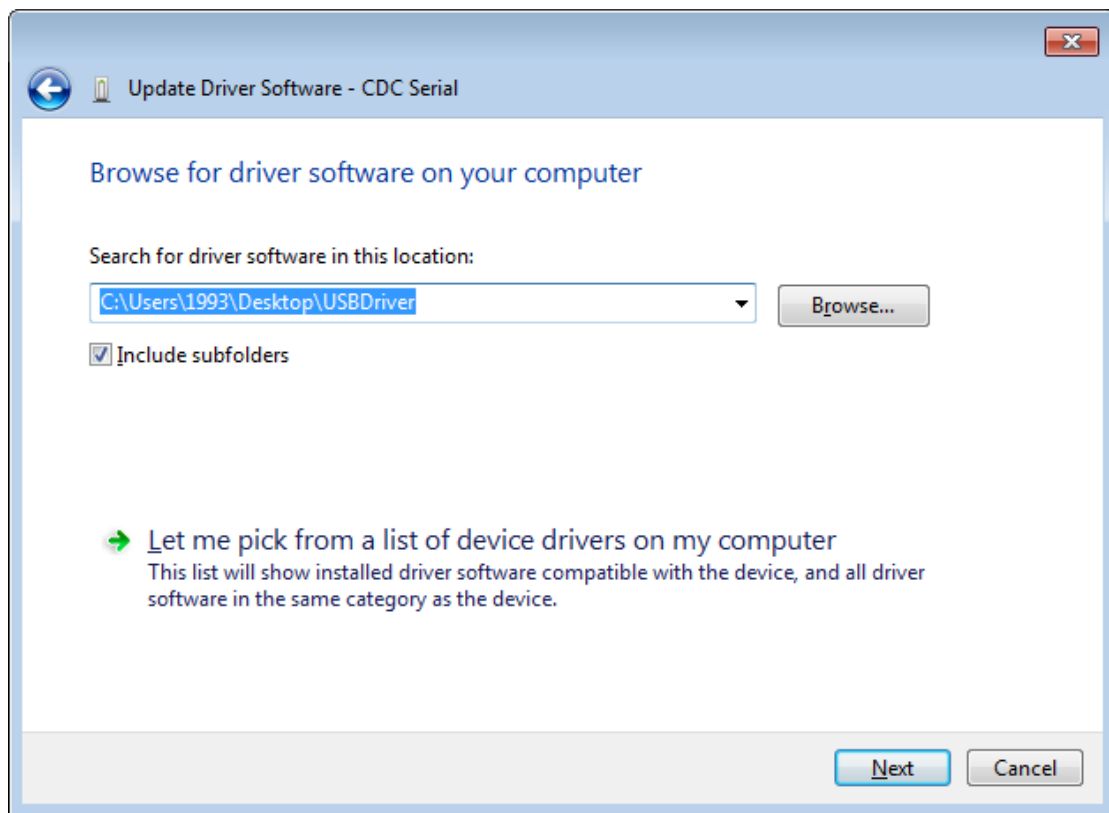
4. Right-click, then select the **Update Driver Software**.



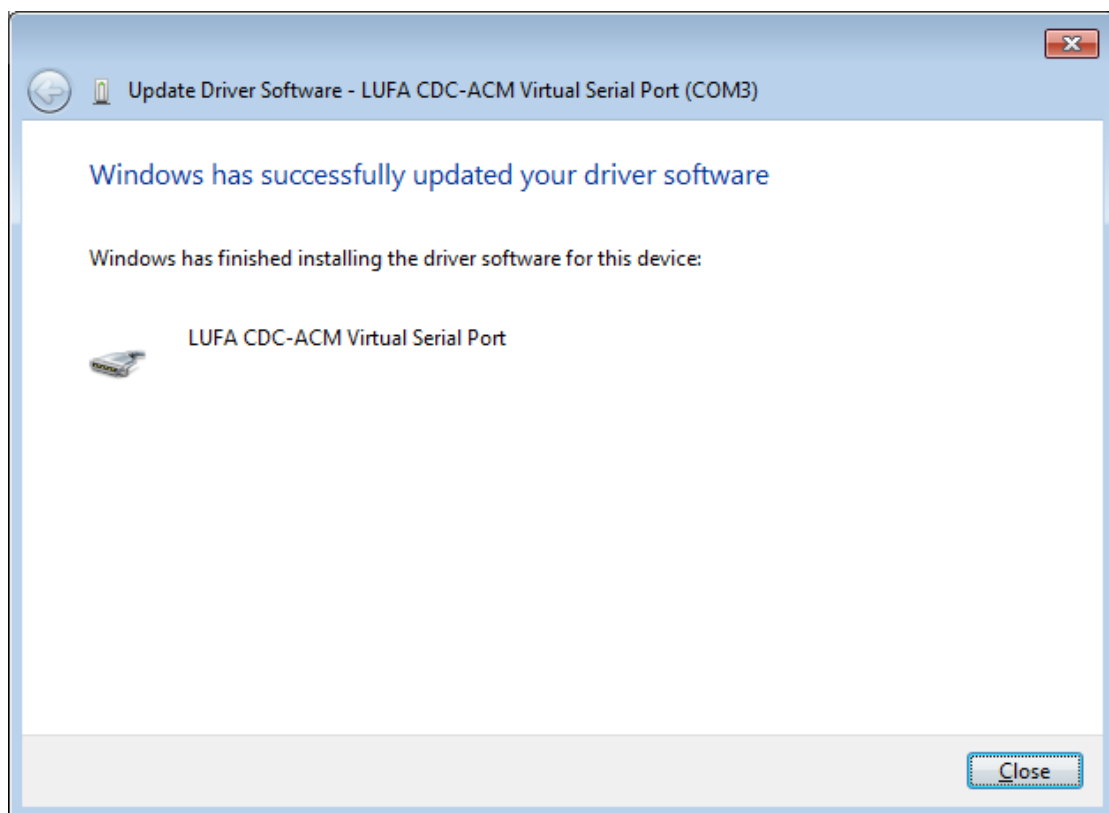
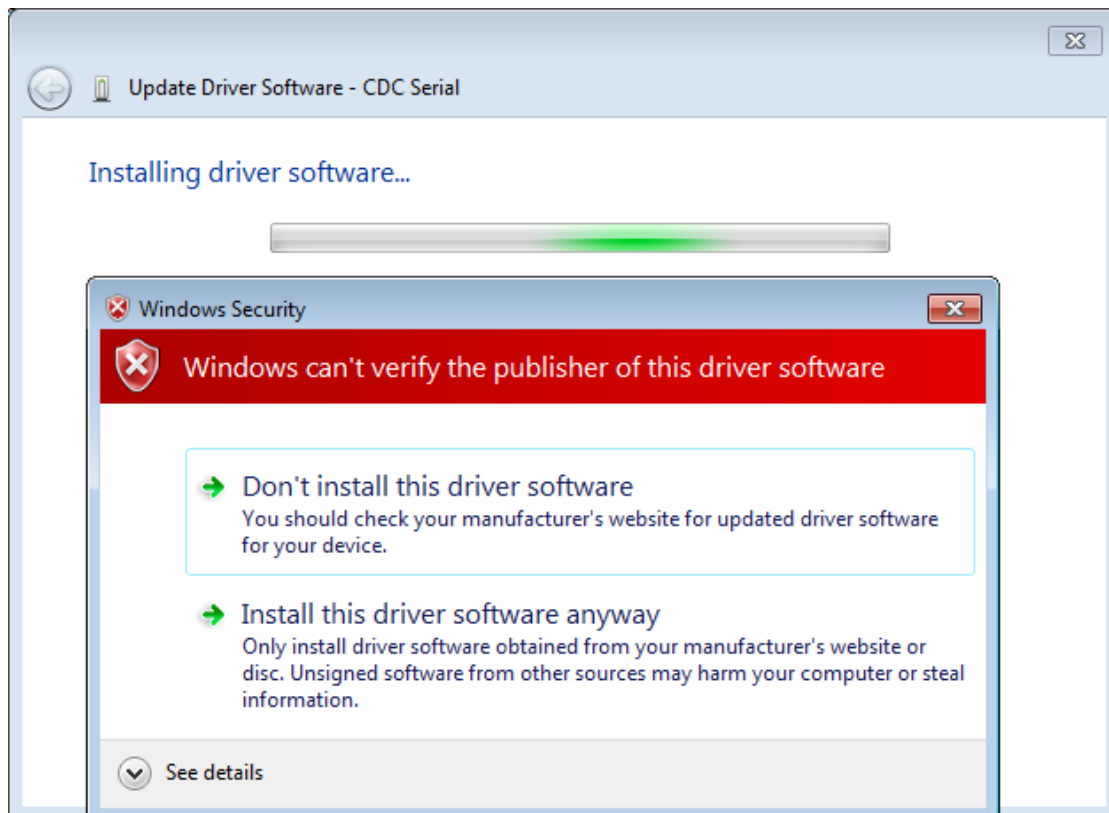
5. Click the **Browse my computer for driver software**.



6. Manually search the driver path and select the location where the driver installation package is placed. Click the **Next**.



7. After clicking the **Next**, the window will pop out of the **Windows Security** prompt and select the **Install this driver software anyway**.



8. After installation, open the **Device Manager** to see if the installation is successful, and if the device is a virtual serial port mode, the following figure:

